



FIELDSTONE

Built by:



For more information, please call:

Gina Allen (757) 439-3003
fieldstonekroll@roseandwomble.com

Standard Features

Interior Features

- Hardwood Flooring in Foyer
- 9' Ceilings First Floor Walls
- Recessed Light with Clear Trim in Kitchen and Downstairs Hallway
- Gas Fireplace with Granite Surround and Custom Mantel
- Cathedral Ceiling/Trays in Master Bedroom
- Security System
- Finished Plaster Walls
- Raised Panel Interior Doors
- Stain Warranty on Wall to Wall Carpet in Choice of Colors
- No Wax Wear Resistant Vinyl Flooring
- Pre-Wired for Ceiling Fan in Family Room and Master Bedroom
- Smoke Detectors on All Floors
- Two Piece Chair Rail in Dining Room
- Two Piece Crown Molding in Dining Room
- Washer/Dryer Hookups in Laundry Room
- Pre-Wired for Garage Door Opener with Safety Infrared Motion Light
- Two Data Points
- Pre-Wire for Wireless Access Point
- Pre-Wire one Surround Sound System

Exterior Features

- Raised Solid Foundation with Brick Skirt
- 30 Year Architectural Roof Shingles
- Exterior House Wrap
- Wrapped Exterior Trim and Vinyl Soffits
- Seamless Aluminum Gutters and Downspouts
- Front Yard Sod
- Insulated Carriage Style Garage Door with Glass Inserts and Decorative Hardware
- Fiberglass Front Entry Door
- Insulated Exterior Doors
- Personal Side Entry Door to Garage
- 12' x 12' Concrete Patio
- Hose Connections Front and Rear
- GFI Water Proof Electrical Outlets
- Deadbolt Locks on All Entry Doors

Kitchen And Baths

- Center Island (per plan)
- 42" Uppers in Kitchen
- Kenmore Appliances in Choice of Stainless Steel, Black, or White
- Large Family Eat-In Area in All Models
- Large Pantry Closets in All Kitchens
- Delta Pull Out Stainless Steel Kitchen Faucet
- Double Bowl Undermount Stainless Steel Sink
- Radiant Smooth Top, Self-Cleaning, Electric Range with Vented Microwave
- Kenmore Multi-Cycle Dishwasher
- Garbage Disposal
- Ice Maker Hook-Up
- Granite Countertops in Kitchen
- Pedestal Sink in Powder Room
- Cultured Marble Vanity Tops in Bathroom
- Double Bowl Vanity in Master Bathroom
- Adult Height Raised Vanity in Master Bathroom
- Ceramic Tile Flooring in Master Bathroom
- Ceramic Tile Shower in Master Suite
- Simulated Tile Showers in Secondary Bathrooms
- Elongated Commodes
- Pressure Balanced and Scald-Guard Showerheads
- Glass Shower Door in Master Bathroom
- Exhaust Fans in All Bathrooms

Energy Saving Features

- Energy Efficient Gas Heating System
- Quick Recovery Gas Hot Water Heater
- Polyseal Air Infiltration Package
- Central Air Conditioning
- Copper Wiring with 200 Amp Electrical Service
- Low E Double Insulated Tilt-Out Maintenance Free Vinyl Windows and Screens
- Two-Zone HVAC on Two-Story Models
- Programmable Digital Thermostats

Warranties And Added Value Services

- HBW-10
- One-Year Builder Warranty
- Pre-Construction Meeting with Project Manager
- Flexibility of Meetings for Homebuyer's Convenience



KrollEnterprises.com

Builder reserves the right to make changes at any time without notice on specifications, prices, materials, colors, equipment and models, and to discontinue models. Minor room size variations and reversed floor plans are subject to field conditions. Models are for illustrative purpose only. Product upgrades, decorating items, furniture and built-ins may exist. See agent for a list of standard features.



The Landmark



ELEVATION 3



ELEVATION 2

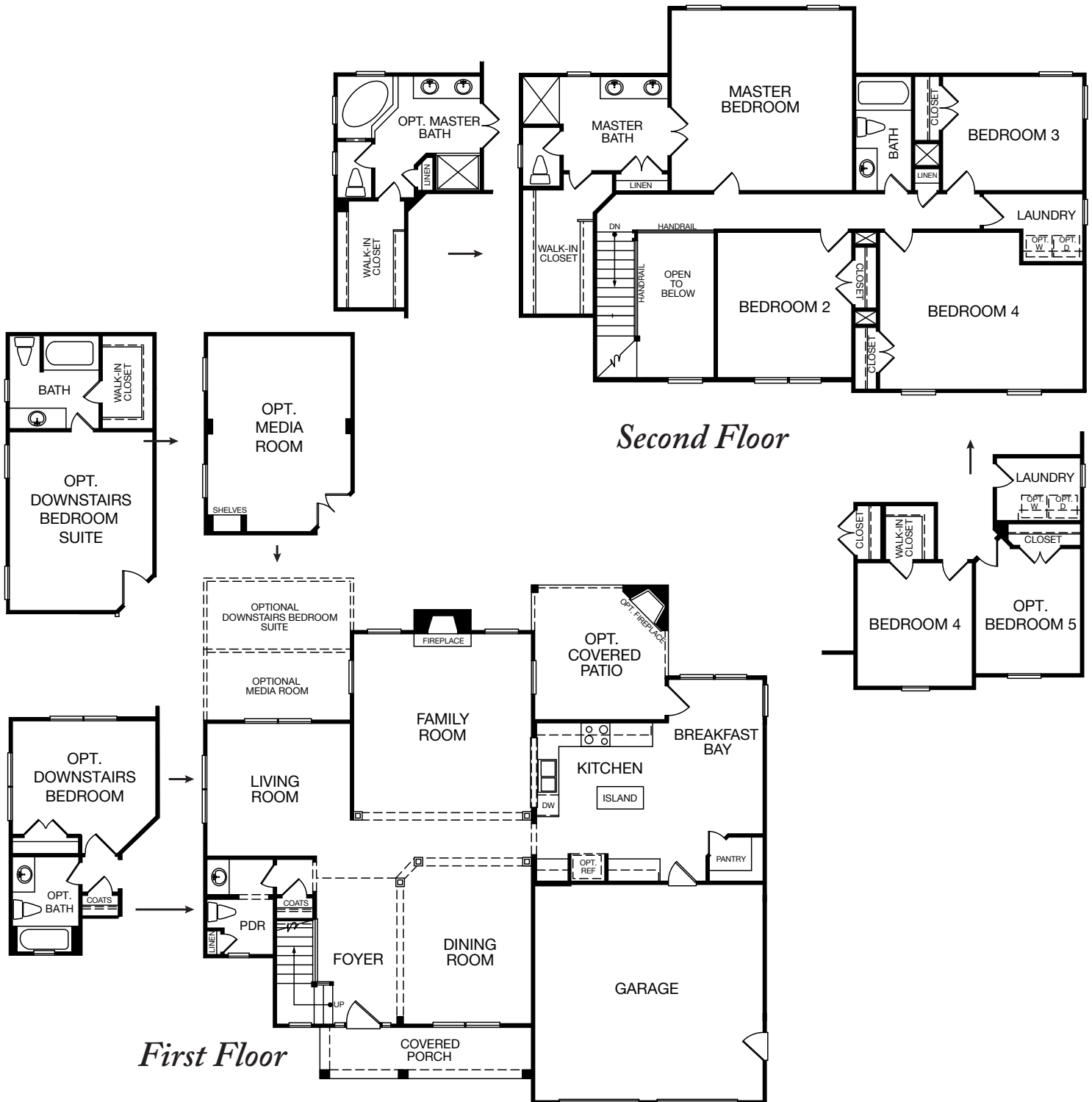


KrollEnterprises.com

Builder reserves the right to make changes at any time without notice on specifications, prices, materials, colors, equipment and models, and to discontinue models. Minor room size variations and reversed floor plans are subject to field conditions. Models are for illustrative purpose only. Product upgrades, decorating items, furniture and built-ins may exist. See agent for a list of standard features.

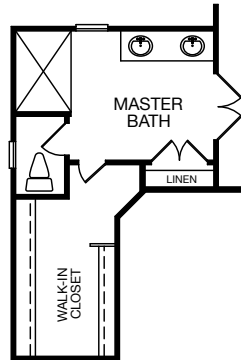


The Landmark



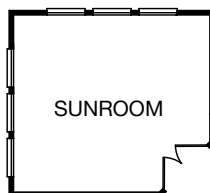
The Landmark

Additional Options

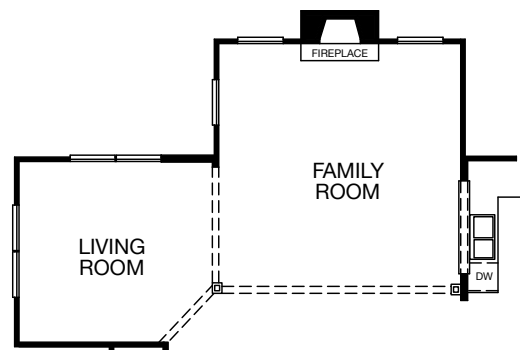


*Opt. Master Bath w/
60" Shower*

Second Floor



Opt. Sunroom



Opt. Open Living Room

First Floor

The Signature



ELEVATION 2



ELEVATION 4

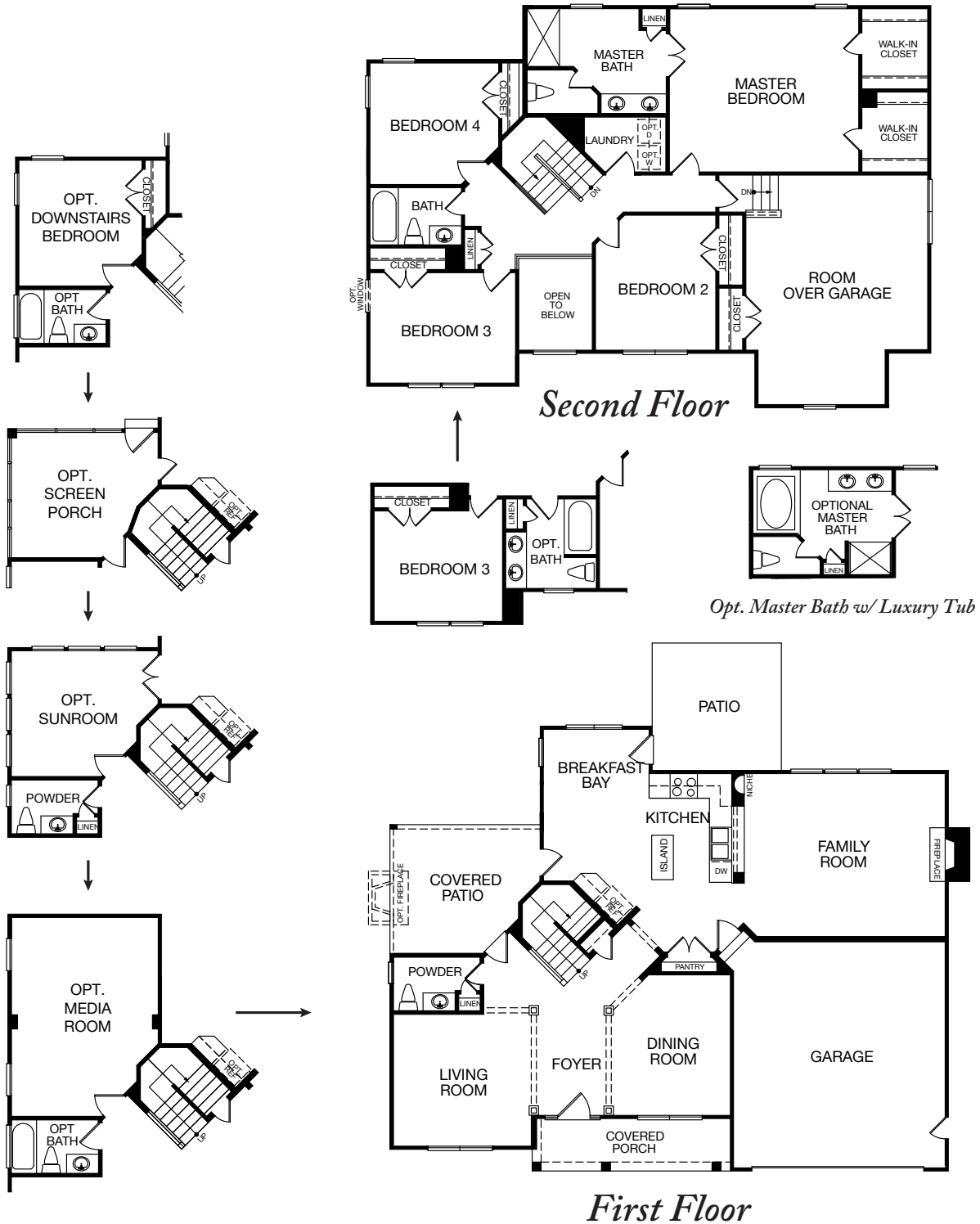


KrollEnterprises.com

Builder reserves the right to make changes at any time without notice on specifications, prices, materials, colors, equipment and models, and to discontinue models. Minor room size variations and reversed floor plans are subject to field conditions. Models are for illustrative purpose only. Product upgrades, decorating items, furniture and built-ins may exist. See agent for a list of standard features.

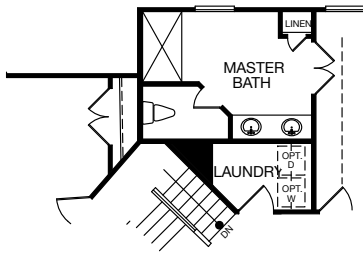


The Signature

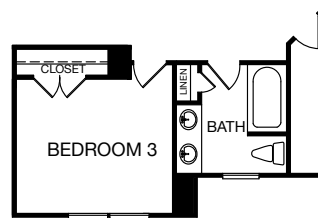


The Signature

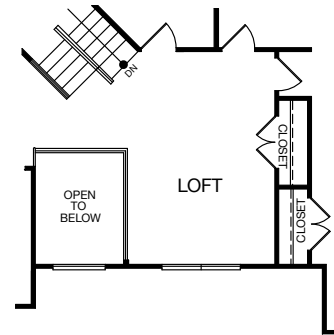
Additional Options



Opt. 60" Shower at Master Bath

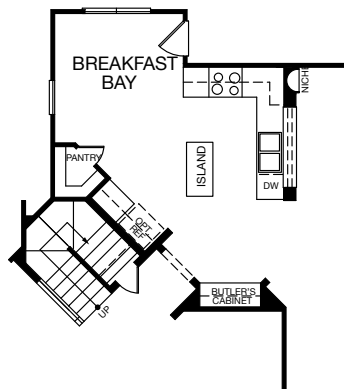


Opt. 2nd Hall Bath



Opt. Loft I/O Bedroom 2

Second Floor



*Opt. Butler Cabinet w/
Walk-in Pantry*

First Floor

The Benchmark



ELEVATION 2



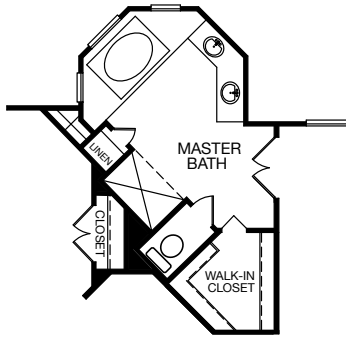
KrollEnterprises.com

Builder reserves the right to make changes at any time without notice on specifications, prices, materials, colors, equipment and models, and to discontinue models. Minor room size variations and reversed floor plans are subject to field conditions. Models are for illustrative purpose only. Product upgrades, decorating items, furniture and built-ins may exist. See agent for a list of standard features.

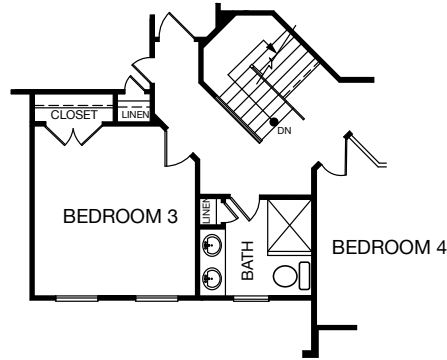


The Benchmark

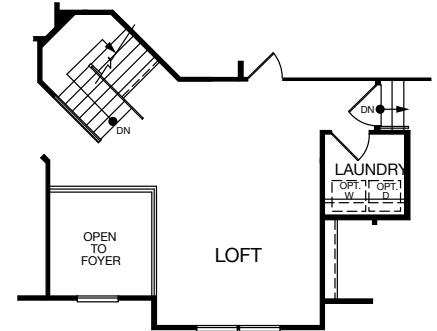
Additional Options



*Opt. Master Bath with
60" Shower and Opt.
Luxury Tub*

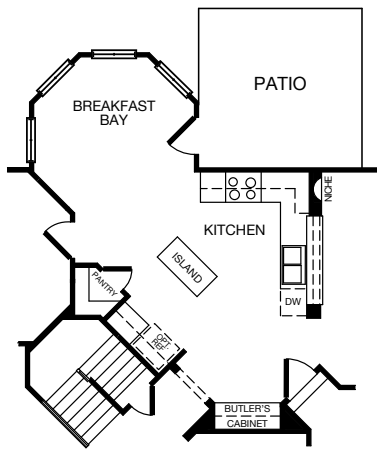


Opt. 2nd Hall Bath

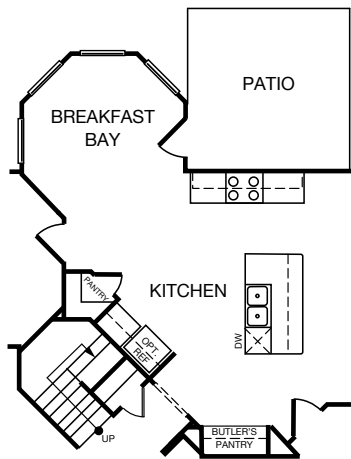


*Opt. Loft ILO
Bedroom 4*

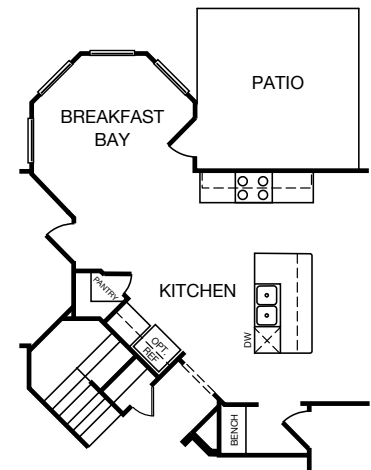
Second Floor



*Opt. Kitchen with
Butlers Cabinet and Opt.
Corner Pantry*



*Opt. Kitchen with
Butlers Cabinet and Opt.
Corner Pantry*



*Opt. Kitchen with
Mudroom Bench and Opt.
Corner Pantry*

First Floor

The Capstone



ELEVATION 2



ELEVATION 3

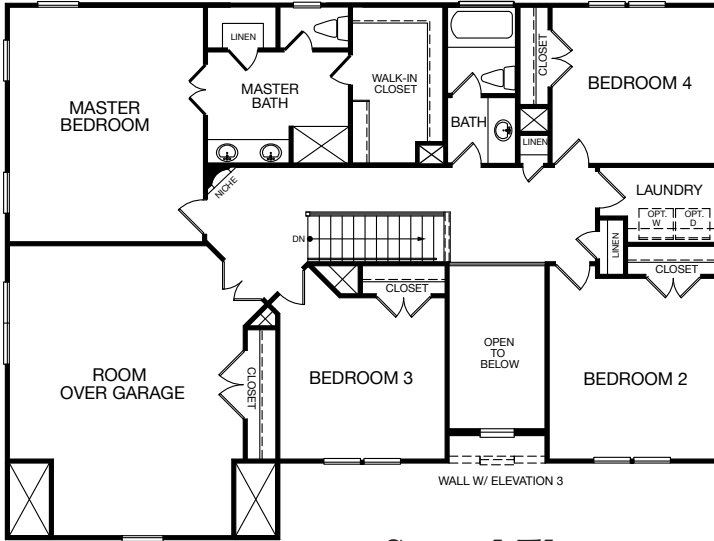


KrollEnterprises.com

Builder reserves the right to make changes at any time without notice on specifications, prices, materials, colors, equipment and models, and to discontinue models. Minor room size variations and reversed floor plans are subject to field conditions. Models are for illustrative purpose only. Product upgrades, decorating items, furniture and built-ins may exist. See agent for a list of standard features.



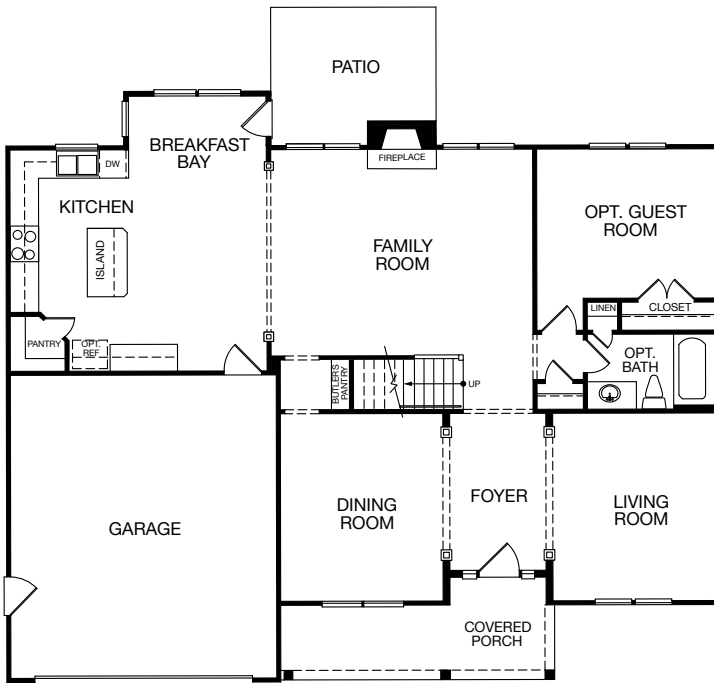
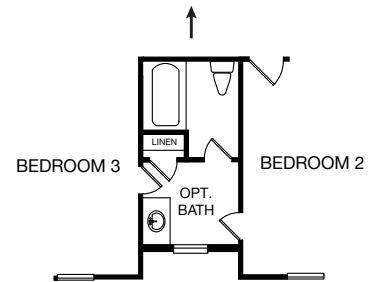
The Capstone



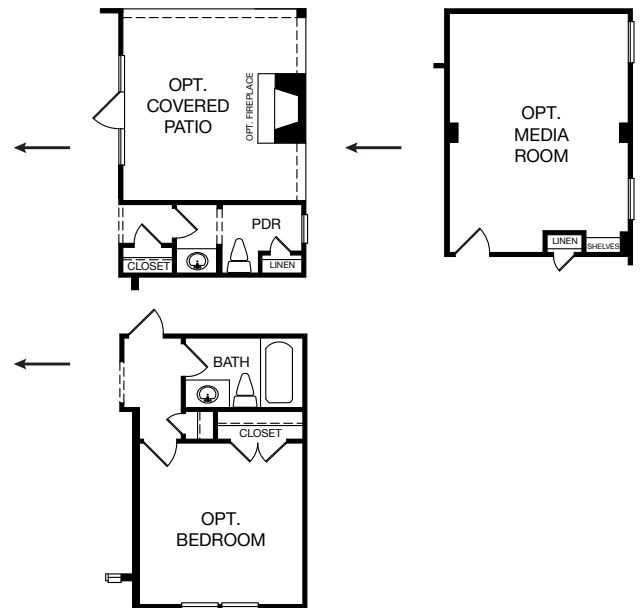
Second Floor



Opt. Luxury Master Suite

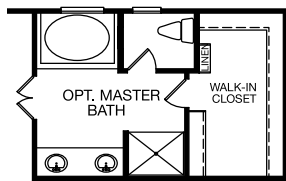


First Floor

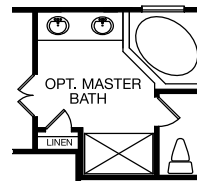


The Capstone

Additional Options

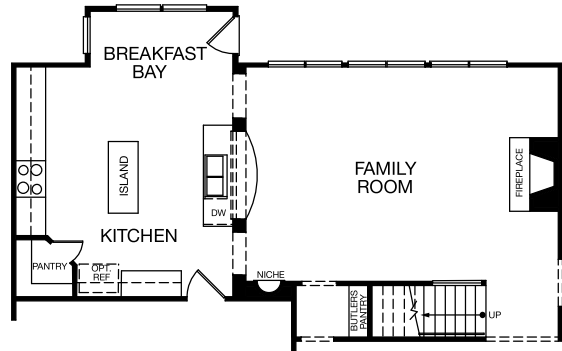


Opt. Master Bath



*Opt. Master Bath
In Luxury Suite*

Second Floor



Opt. Kitchen/Family Room

First Floor

The Meridian

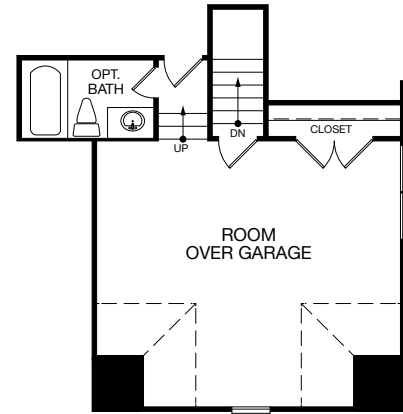


ELEVATION 1

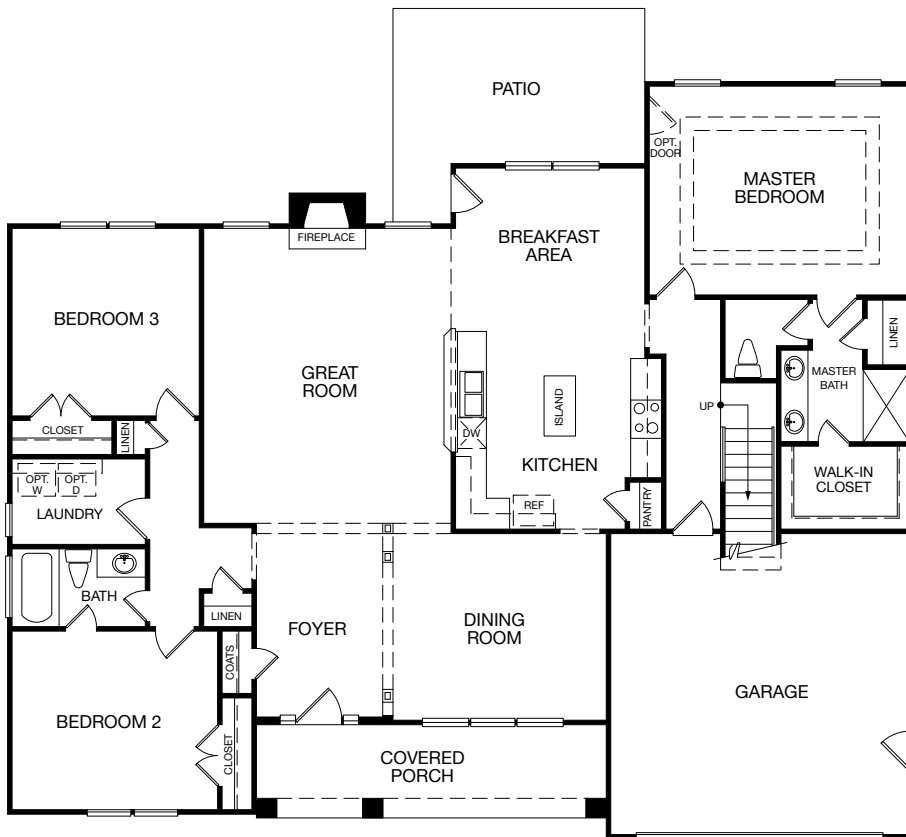


ELEVATION 2

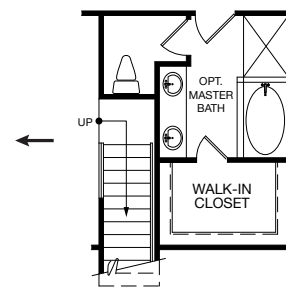
The Meridian



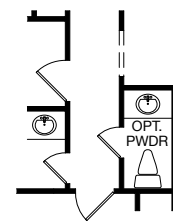
Second Floor



First Floor



Opt. Master Bath w/ Luxury Tub



Opt. Powder Room In Lieu Of Linen Closet

The Meridian II



ELEVATION 1



ELEVATION 2

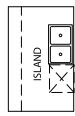
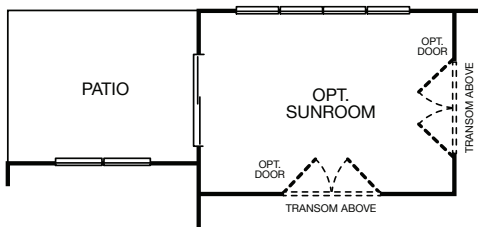


KrollEnterprises.com

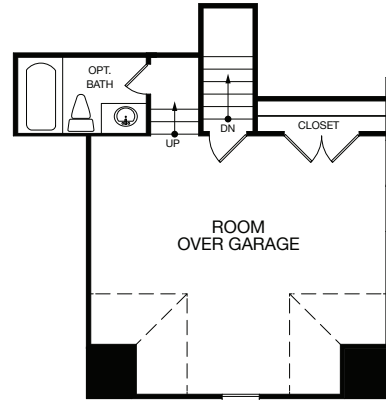
Builder reserves the right to make changes at any time without notice on specifications, prices, materials, colors, equipment and models, and to discontinue models. Minor room size variations and reversed floor plans are subject to field conditions. Models are for illustrative purpose only. Product upgrades, decorating items, furniture and built-ins may exist. See agent for a list of standard features.



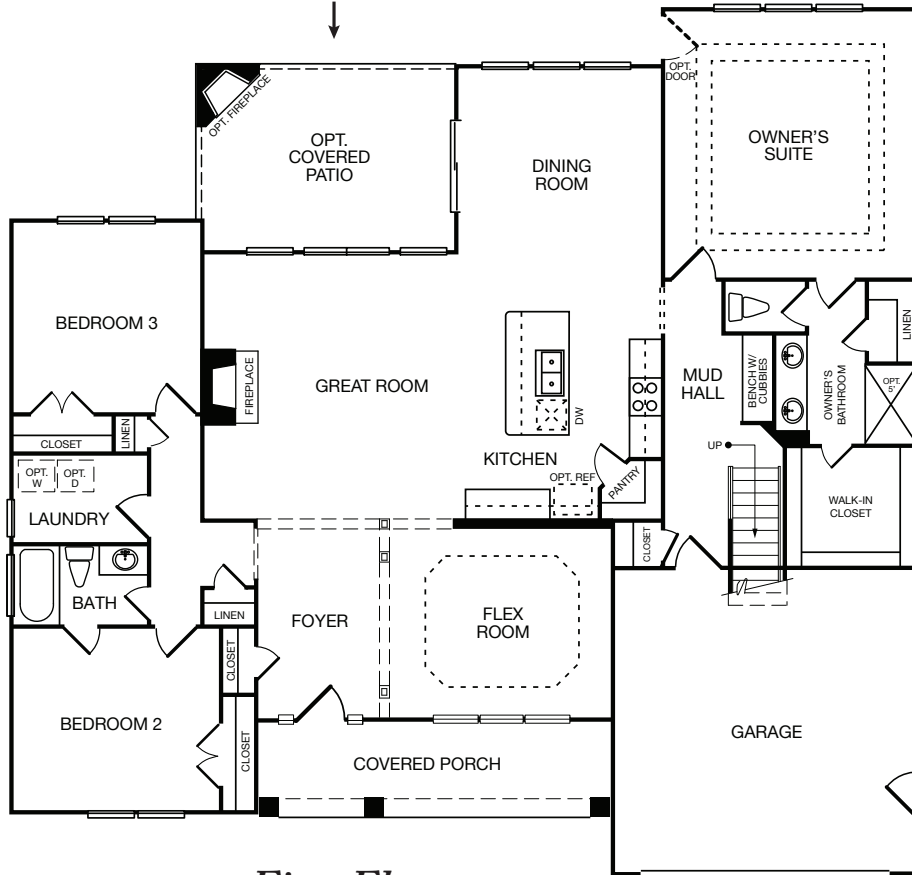
The Meridian II



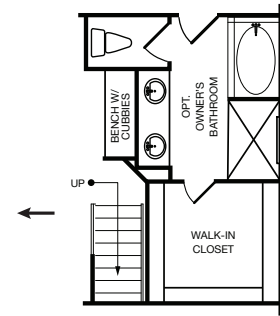
Opt. 5'x8' Kitchen Center Island



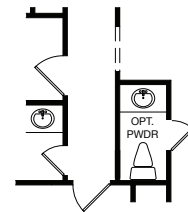
Second Floor



First Floor



Opt. Owner's Bathroom w/ Luxury Tub and Opt. 5' Shower



Opt. Powder Room In Lieu Of Linen Closet

The Platinum II



ELEVATION 1



ELEVATION 2



ELEVATION 3



KrollEnterprises.com

Builder reserves the right to make changes at any time without notice on specifications, prices, materials, colors, equipment and models, and to discontinue models. Minor room size variations and reversed floor plans are subject to field conditions. Models are for illustrative purpose only. Product upgrades, decorating items, furniture and built-ins may exist. See agent for a list of standard features.



